

LCC Modelling System

B 00-02 19th century roadside Railway Station

Bundle contains:

- 1x LCC 00-00
- 1x LCC 00-01
- 1x LCC 00-02
- 1x LCC 00-07A
- 1x LCC 00-08A
- 1x LCC 00-09
- 2x LCC 00-21
- 2x LCC 00-25
- 2x LCC 00-26
- 2x LCC 00-27A
- 2x LCC 00-27B
- 2x LCC 00-29
- 5x LCC 00-33
- 2x LCC 02-09
- 2x LCC 02-13
- 6x LCC 02-14
- 2x LCC 02-18
- 2x LCC 02-30
- 2x LCC 02-29
- 12x LCC 02-31
- 6x LCC 02-41

Attention – same elements of roofing will need to be cut to size. For instruction go to manual which you can download from our website

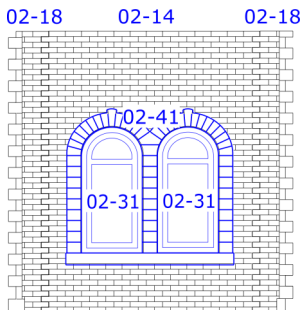
www.lcut.co.uk

All drawings are not in scale.

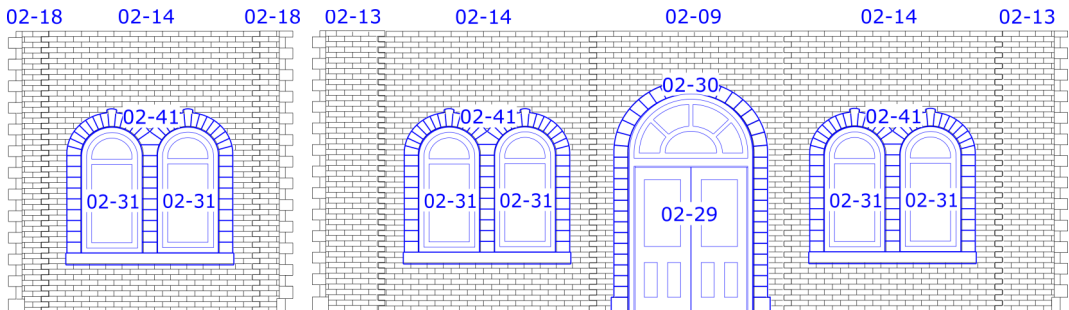
All drawings represent assembly suggestions – 139 mm x 52 mm building size with 200mm x 115mm hipped roof (approximate)

LCC Modelling System is flexible and you can make easy modification. Please visit our website at www.lcut.co.uk to shop for additional LCC elements.

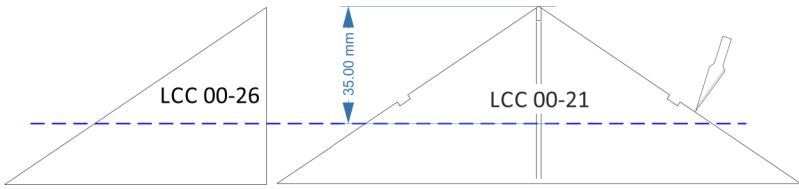
SIDE ELEVATIONS



FRONT/ROADSIDE ELEVATION



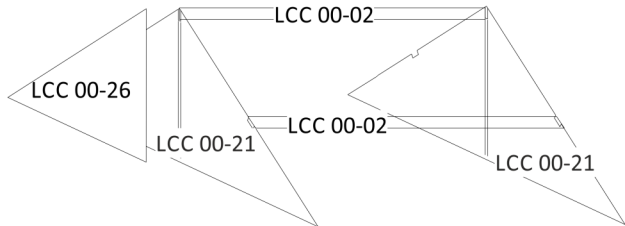
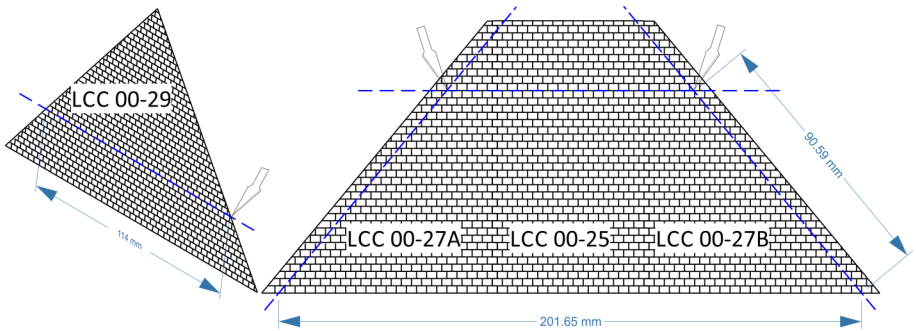
ROOF



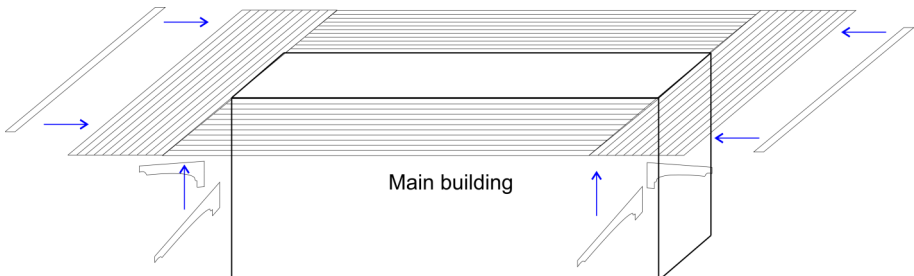
Trim roof tile panels to fit the dimensions of the building. Shown dimensions are approximations, please double check your measurements before cutting.

Fold and glue ridge tiles (LCC 00-09) and glue them to the corners. Please refer to online manual for more detailed hipped roof assembly guide.

Assemble and glue chimneys in chose place on side of the roof.



CANOPY



Glue LCC 00-33 around the top of the building with etching facing down.

Glue brackets to the underside in chosen places.

Glue provided strips in LCC 00-33 around the canopy flush with the top surface.