

# LCC Modelling System

## B 00-28E Canopy - end section

This kit includes elements which can be used to assemble end section of station canopy.

Footprint:

Width: 68mm

Height: 75mm

Length: 80mm

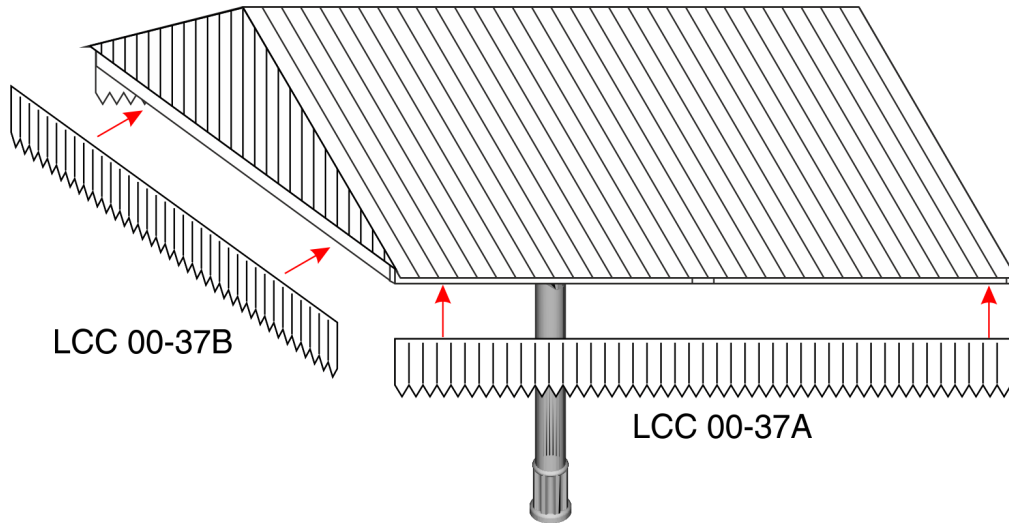
**All drawings are not in scale.**

LCC Modelling System is flexible and you can make easy modification. Please visit our website at [www.lcut.co.uk](http://www.lcut.co.uk) to shop for additional LCC elements.

**!** We recommend resin based glue for plastic parts and PVA or wood glue for fibre board parts.

Kit contains:

- 2x LCC 00-37A
- 1x LCC 00-37B
- 1x LCC 00-108
- 4x LCC 00-109
- 1x LCC 00-110
- 1x LCC 00-111
- 1x LCC 00-112
- 1x LCC 00-113



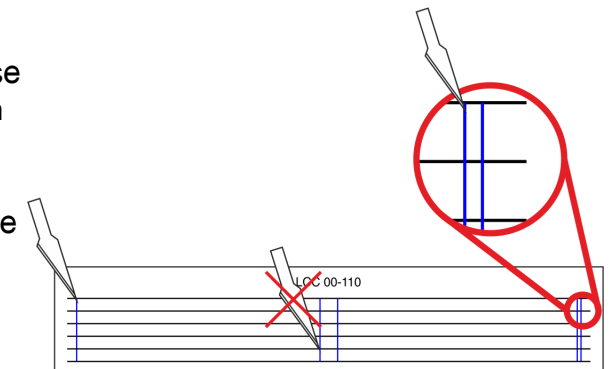
Last step is to glue the valence (LCC 00-37A) to the sides of the canopy section. Glue LCC 00-37B just below LCC 00-111.

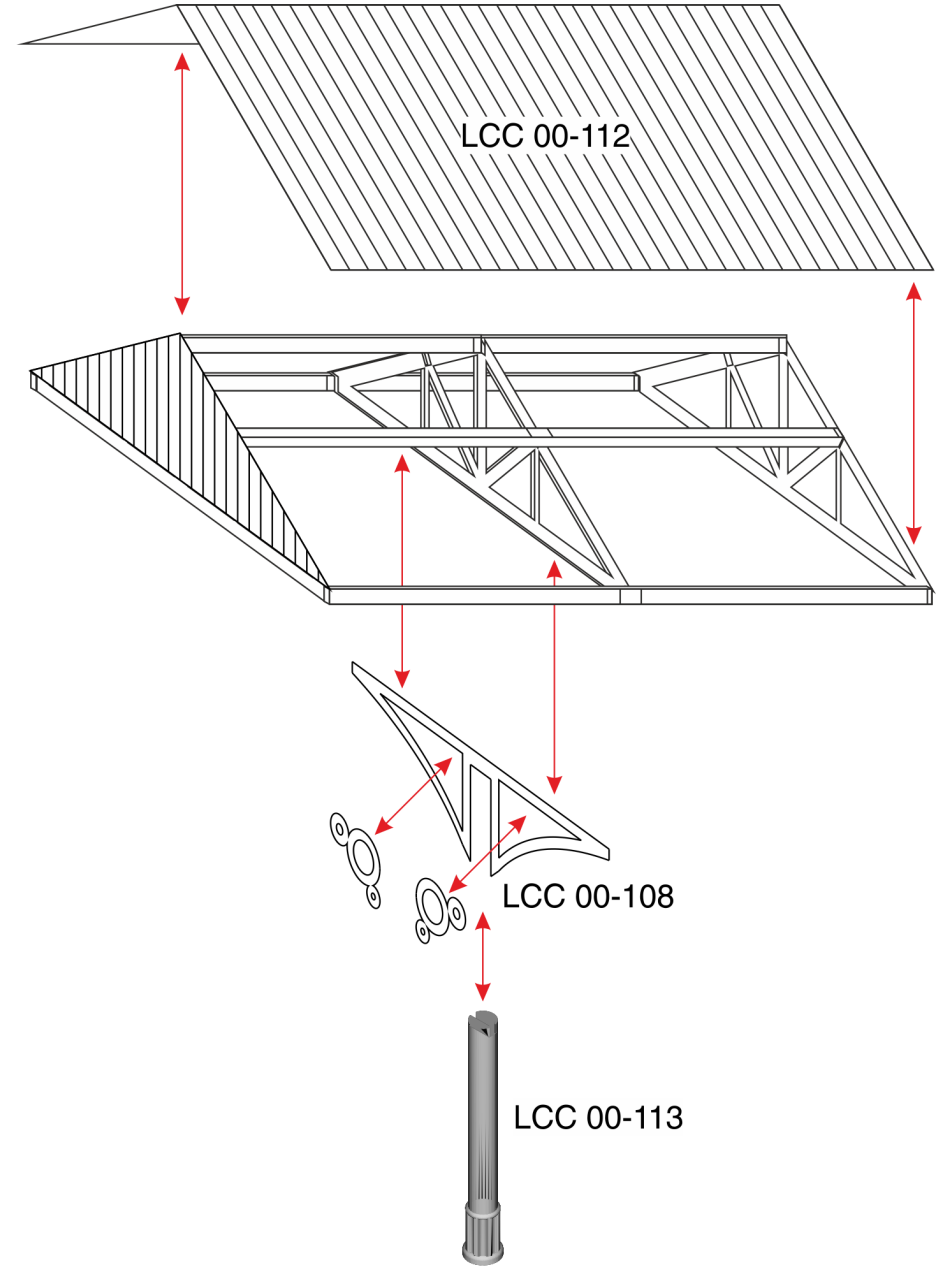
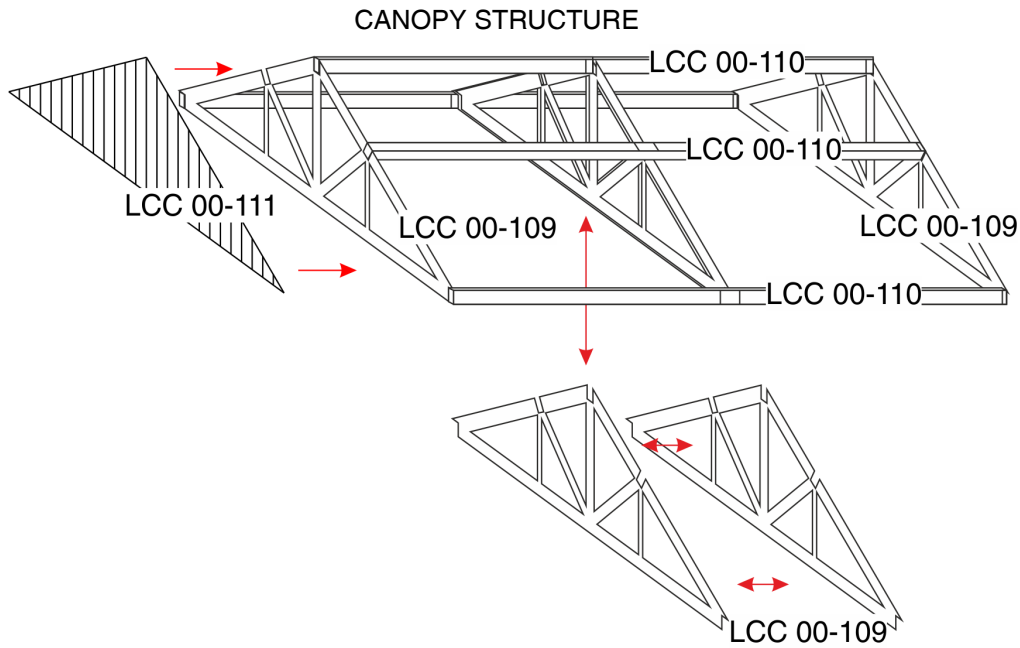
Canopy elements can be joined together to create longer canopy.

In addition canopy sections can be shortened by trimming LCC 00-110 and LCC 00-112 to desired length and assembling the canopy as normal. The canopy can be used with just the middle sections but ending sections for the canopy are available.

### PREPERATION

Start by cutting out support strips from LCC 00-110. Use marked lines as guides. On the side with two markings use the ones that will yield shorter strips. Do not cut the strips in the middle as they are used to align the strips.





Start by gluing two LCC 00-109 together. Glue LCC 00-111 to one of the single LCC 00-109 elements. Ensure that the parts are flush with each other at the top. Using LCC 00-110 strips glue LCC 00-109 together to form the internal structure of the canopy. Use the markings in the middle of LCC 00-110 to align the doubled up LCC 00-109. Because LCC 00-110 have been shortened only on one side make sure LCC 00-110 are facing in the same direction to ensure correct alignment.

Glue the ironworks into LCC 00-108 (optional). Glue LCC 00-108 to the middle truss. Slot at the top of LCC 00-113 may need to be sanded to width of at least 1.4mm. Gently push the column into the slot in the middle of LCC 00-108. If desired sand the column to remove the layer marking. Take care as the layers may delaminate if excessive force is applied. If the column delaminated it is possible to glue it back together with resin based glue. Fold the LCC 00-112 along the engraved line and glue to the top of the canopy structure.