

LCC Modelling System

B 00-14

Medium station with two floors – bundle

Bundle contains:

- 2x LCC 00-00
- 2x LCC 00-01
- 1x LCC 00-02
- 2x LCC 00-06A
- 2x LCC 00-06B
- 2x LCC 00-09
- 1x LCC 00-22
- 1x LCC 00-24A
- 2x LCC 00-49
- 2x LCC 00-50
- 1x LCC 00-51
- 1x LCC 00-53
- 1x LCC 00-54
- 3x LCC 02-03
- 2x LCC 02-19
- 6x LCC 02-20
- 4x LCC 02-21
- 2x LCC 02-23
- 4x LCC 02-34
- 4x LCC 02-35
- 10x LCC 02-36
- 10x LCC 02-37
- 4x LCC 02-39
- 6x LCC 02-40
- 2x LCC 02-44

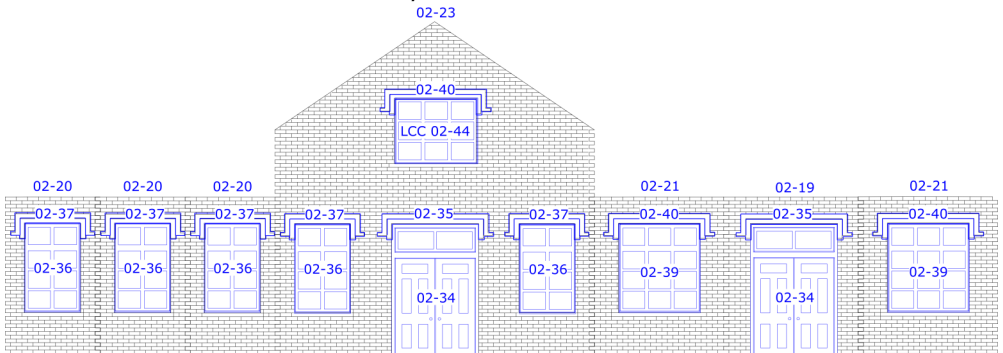
Attention – same elements of roofing and wall panels will need to be cut to size. For instruction go to manual which you can download from our website www.lcut.co.uk

All drawings are not in scale.

All drawings represent assembly suggestions – building size 265 mm x 61 mm with gabled roof.

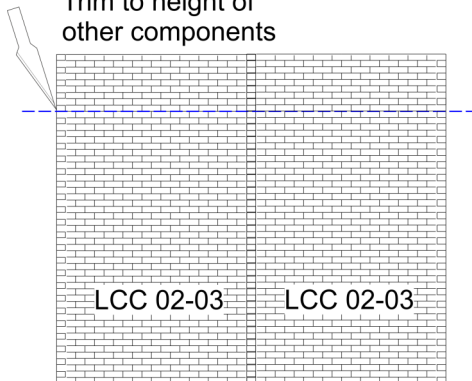
LCC Modelling System is flexible and you can make easy modification. Please visit our website at www.lcut.co.uk to shop for additional LCC elements.

PLATFORM/ROADSIDE ELEVATION



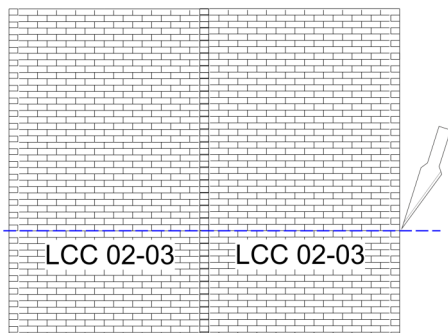
SIDE ELEVATION

Trim to height of other components



1st FLOOR WALL

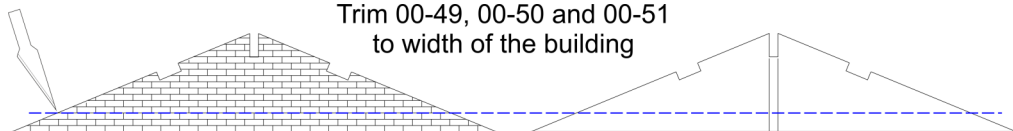
Trim 4 small panels out of LCC 02-03 to the height of 1st floor.



Approximate
17.05 mm

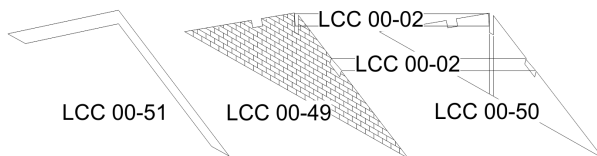
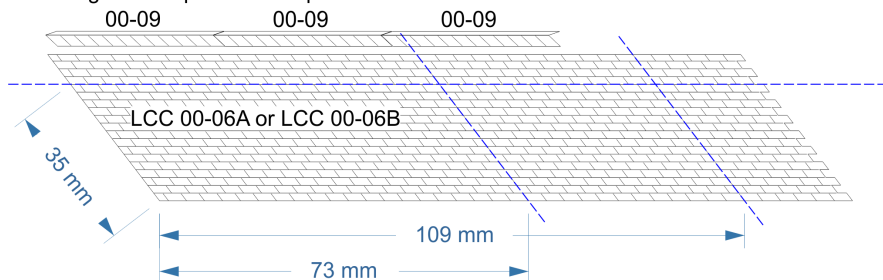
ROOF

Trim 00-49, 00-50 and 00-51 to width of the building



Trim out 2 panels 35mm by 73mm and 2 panels 35mm by 109mm from 00-06A and 00-06B panels. Glue the panels to side roof sections. Trim out 2 55mm high and 64mm wide panels from 00-24A for the top roof. Assemble and glue chimneys in chosen places.

Fold 00-09 in half along the middle line and glue on top of the roof panels.



Glue 00-51 to the side of 00-49 and then glue to side elevation (or leave floating for removable roof). Glue optional 00-02 strips between 00-49 and 00-50. Glue cut roof panels to this pre-assembly flush with 1st floor wall and 00-51.

For more information on assembly please visit the full manual on our website.